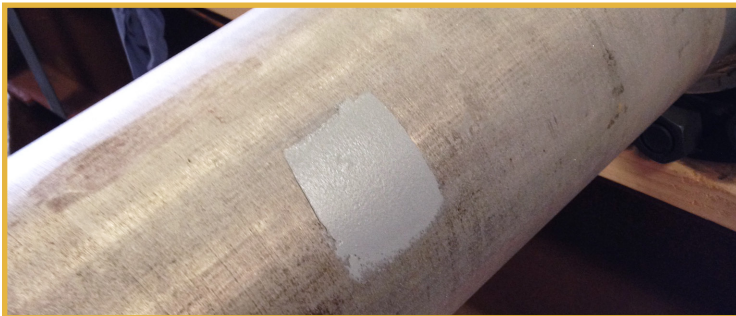




# METAL REPAIR PRODUCTS

877-982-7667 | 601-933-3595 | ErgonArmorCustServ@ergon.com | ergonarmor.com



## NOVOCOAT™ R1900 QUICK REPAIR

### FEATURES:

- Excellent chemical resistance
- Complies with ASME PCC-2, Article 4.1 as long-term repair
- Machinable paste grade
- Fast cure for emergency repairs
- Outstanding Bond Strength

### RECOMMENDED USES:

- Pitted/damaged steel
- Emergency pipe repairs

Novocoat R1900 Quick Repair compound is a fast-setting version of our high-performance engineered paste-grade Novolac material for machine shop and field use to repair and rebuild equipment. It is ideal for fixing leaks on tanks, piping and electrical bushings, and for setting key-ways or taper fits for fast turnarounds. It will repair all types of ferrous and non-ferrous metals, fiberglass, PVC and similar plastics, as well as other composites. Non-shrink and high slump make it ideal for vertical applications.

## NOVOCOAT™ EP4900 CERAMIC CARBIDE

### FEATURES:

- 100% solids, no VOCs
- Outstanding abrasion resistance
- Application and cure at room temperature—no hot work involved
- No shrinkage, expansion or distortion
- Quick return to service under proper cure conditions
- FDA compliant to CFR 175.105 and 175.300

### RECOMMENDED USES:

- Coal chutes and silos
- Dry bag houses
- Non-skid



Novocoat EP4900 Ceramic Carbide is a high-performance, ceramic-filled novolac repair/wear compound for severe environments such as coal chutes, coal silos, rock crushers and dry bag houses. It offers exceptional abrasion resistance, cures in very low temperatures and tolerates less than optimal substrate conditions.





## NOVOCOAT™ SP2000AR CERAMIC COATING

### FEATURES:

- 100% solids, no VOCs
- Excellent immersion resistance
- Less than 24mg loss on ASTM D4060 Test
- Long-term wear protection
- Excellent abrasion resistance

### RECOMMENDED USES:

Protection where severe abrasion resistance is required on steel or concrete surfaces in applications such as dry product chutes, hoppers and silos.

Novocoat SP2000AR Ceramic Coating is a ceramic-filled epoxy engineered to provide abrasion resistance along with good chemical resistance to organic acids, alkali and salts. It is known for its forgiving application characteristics in adverse and varied conditions.

## NOVOCOAT™ EP3900 MACHINABLE PASTE

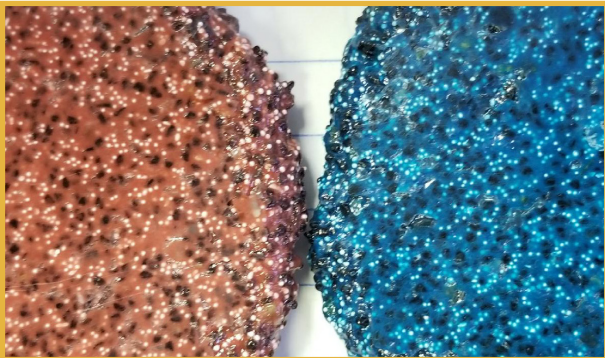
### FEATURES:

- 100% solids, no VOCs
- Excellent UV stability
- Excellent impact resistance and corrosion protection

### RECOMMENDED USES:

- Most often used in pitted steel repair
- Well suited to rebuild tube sheets, shafts, bearing houses, etc.

Novocoat EP3900 Machinable Paste is a machinable, synthetic rebuild material for metal parts and surfaces. It has a smooth, spreadable consistency which makes it easy to apply.



## NOVOCOAT™ EP3800 CERAMIC CARBIDE

### FEATURES:

- 100% solids, no VOCs
- Outstanding abrasion resistance
- Application and cure at room temperature—no hot work involved
- No shrinkage, expansion or distortion
- Quick return to service under proper cure conditions

### RECOMMENDED USES:

- Coal chutes and silos
- Dry bag houses
- Ball mills
- Non-skid

Novocoat EP3800 Ceramic Carbide is a high performance, ceramic-filled novolac repair/wear compound for severe environments such as coal chutes, coal silos, rock crushers and dry bag houses. Available in fast-cure and slow-cure options, it offers exceptional abrasion resistance, cures in very low temperatures and tolerates less than optimal substrate conditions.

## NOVOCOAT™ SC3900 ADHESIVE PASTE/CAULK

### FEATURES:

- 100% solids, no VOCs
- Application and cure at room temperature
- Multipurpose durable repair composite
- No shrinkage, expansion or distortion
- Quick return to service
- Fully machinable using conventional tools

### RECOMMENDED USES:

- Anchor adhesive
- Resurface of pitted metal surfaces
- Leak repair
- Plate bonding
- Pump casing
- High strength structural adhesive for metal bonding



Novocoat SC3900 Adhesive Paste/Caulk is a two-component 100% solids trowel-grade epoxy novolac caulk for use as a chine repair or lap weld feathering product for steel tanks. It is often used in conjunction with chemical-resistant topcoats such as Novocoat™ SC3300 Novolac Epoxy Lining and Novocoat™ SC5400 Lining. It offers excellent chemical resistance to a wide range of petrochemical products, fuels, organic/inorganic acids and alkalis. A long re-coat window allows it to be top-coated up to 14 days, depending on temperatures.